



Remote Desktop Guide

WebCCTV

Let's make things SAFER!

Contents

| | | |
|---|--|---|
| 1 | CREATING REMOTE DESKTOP CONNECTION..... | 3 |
| 2 | OPENING SAVED REMOTE DESKTOP CONNECTION..... | 4 |
| 3 | FINISHING REMOTE DESKTOP CONNECTION..... | 4 |
| 4 | MORE INFORMATION..... | 4 |

You can reach WebCCTV NVR from another PC using the remote desktop tool from Microsoft.

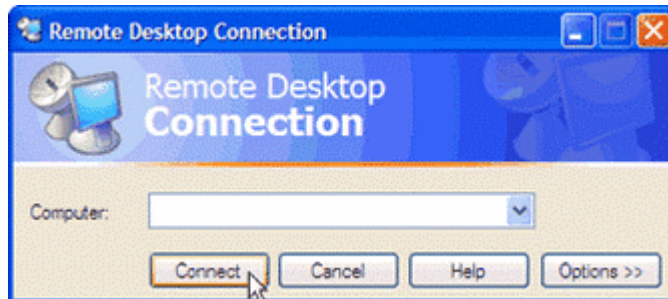
A remote desktop client is installed on every computer with Windows XP by default. If you are using another operating system, you can download the client from the Microsoft website: <http://www.microsoft.com/windowsxp/downloads/tools/rdclientdl.msp>

Once you have installed client software on a Windows-based client computer, you are ready to start a Remote Desktop session. You must first establish a virtual private network connection or remote access service connection from your client computer to your office network, or host computer.

1 Creating Remote Desktop Connection

To create a new Remote Desktop Connection follow steps below:

1. Open **Remote Desktop Connection**. Click **Start->Programs** or **All Programs->Accessories->Communications**, and then click **Remote Desktop Connection**.
2. In the **Computer** field type the computer name for your computer running Windows XP Professional that has Remote Desktop enabled and for which you have Remote Desktop permissions.



Remote Desktop Connection Screen



To find the computer name, right-click the **My Computer** icon on your desktop, click **Properties**, and then click the **Computer Name** tab.

3. Click **Connect**. The **Log On to Windows** dialog box appears.
4. In the **Log On to Windows** dialog box, type your user name, password, and domain (if required), and then click **OK**. The Remote Desktop window will open and you will see the desktop settings, files, and programs that are on your office computer. Your office computer will remain locked. Nobody will be able to work at your office computer without a password, nor will anyone see the work you are doing on your office computer remotely.



To change your connection settings, (such as screen size, automatic logon information, and performance options), click **Options** before you connect.

2 Opening saved Remote Desktop Connection

To open a saved Remote Desktop Connection follow steps below:

1. In Windows Explorer, open the **My Documents\Remote Desktops** folder.
2. Click the **.Rdp** file for the connection you want to open.



A Remote Desktop file (.rdp) file contains all of the information for a connection to a remote computer, including the **Options** settings that were configured when the file was saved. You can customize any number of .rdp files, including files for connecting to the same computer with different settings. For example, you can save a file that connects to **MyComputer** in full screen mode and another file that connects to the same computer in 800x600 screen size. By default, .rdp files are saved in the **My Documents\Remote Desktops** folder. To edit an .rdp file and change the connections settings it contains, right-click the file and then click **Edit**.

3 Finishing Remote Desktop Connection

To log off and finish the Remote Desktop Connection follow steps below:

1. In the **Remote Desktop Connection** window click **Start** and then click **Shut Down**. The **Shut Down Windows** dialog box appears.
2. In the drop-down menu, select **Log Off <username>**, and then click **OK**.

4 More information

This and more information is also available on the Microsoft website.

<http://www.microsoft.com/windowsxp/using/mobility/default.mspx>